

Need a Mortgage in principle
to make offers? Call us now
for quick assistance!
0121 775 0101



Do you need to sell?
Start your journey now!
Call us we can help.
0121 775 0101



SCAN FOR MORE INFO
SIZE - 1986 Sq Ft
TENURE - Freehold
COUNCIL TAX - Dudley Council - E
BROADBAND - Upload Max 1000Mbps Download Max 1800Mbps
MOBILE SERVICES - Three - 80% EE - 81% 02 - 81% Vodafone - 89%
EPC - D - 59 78
PARKING - For at least 4 Cars
FLOODRISK - Very Low
SERVICES - Mains
COVENANTS - N/A

96 Broadway Avenue
Halesowen, B63 3DR
Offers in the Region of £450,000

This impressive detached dormer bungalow presents a remarkable opportunity for those seeking a spacious family home with potential for modernisation. This property is not just a house; it is a canvas awaiting your personal touch. With its generous space and prime location, it is an exceptional opportunity for those looking to create their dream home. Offered with no upward chain.

FEATURES

- Spacious Detached Dormer Bungalow
- Offered with No Upward Chain
- Requiring Some Modernisation
- Two Reception Rooms
- Breakfast Kitchen
- Two Ground Floor Bedrooms & Shower Room
- Two Good Sized First Floor Bedrooms & Bathroom
- Useful Loft Storage Areas
- Private Rear Garden
- Ample Driveway Parking & Double Garage

Are you an investor
interested in expanding your
portfolio?

**Call 0121 775 0101 to provide your
investment criteria for alerts.**



Sneak Peeks

Every week, we unveil "Sneak Peeks," a feature showcasing exclusive properties before they hit Rightmove and other platforms.

The Landlord Club

Join our Landlord Club for weekly updates on legislation, market trends, and our Letting Director's 'Investment Pick of the Week' for optimal ROI.

HTSPMD

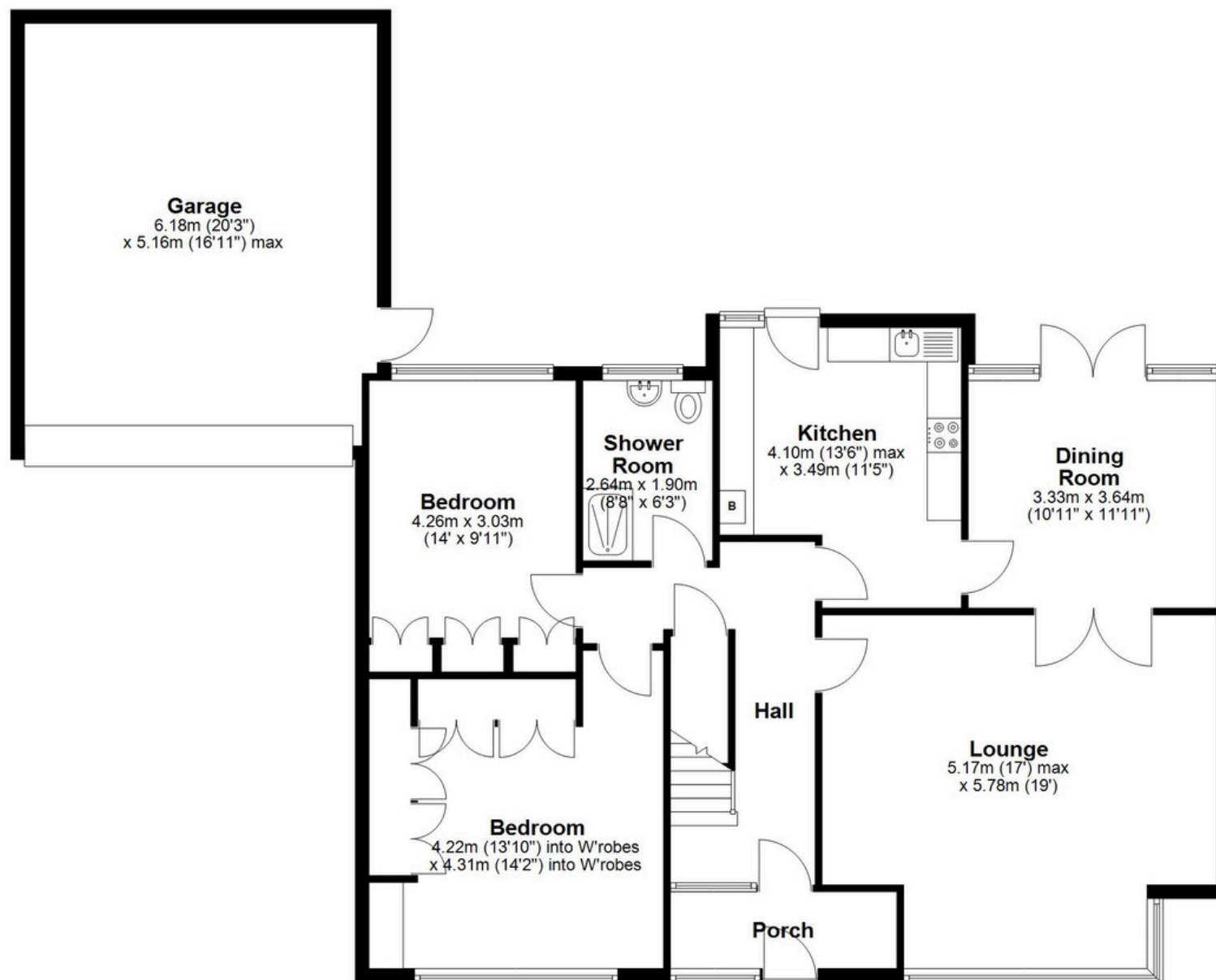
Tune into 'How's The Solihull Property Market Dom' weekly for a quick, insightful snapshot of the market.

The Mortgage Update

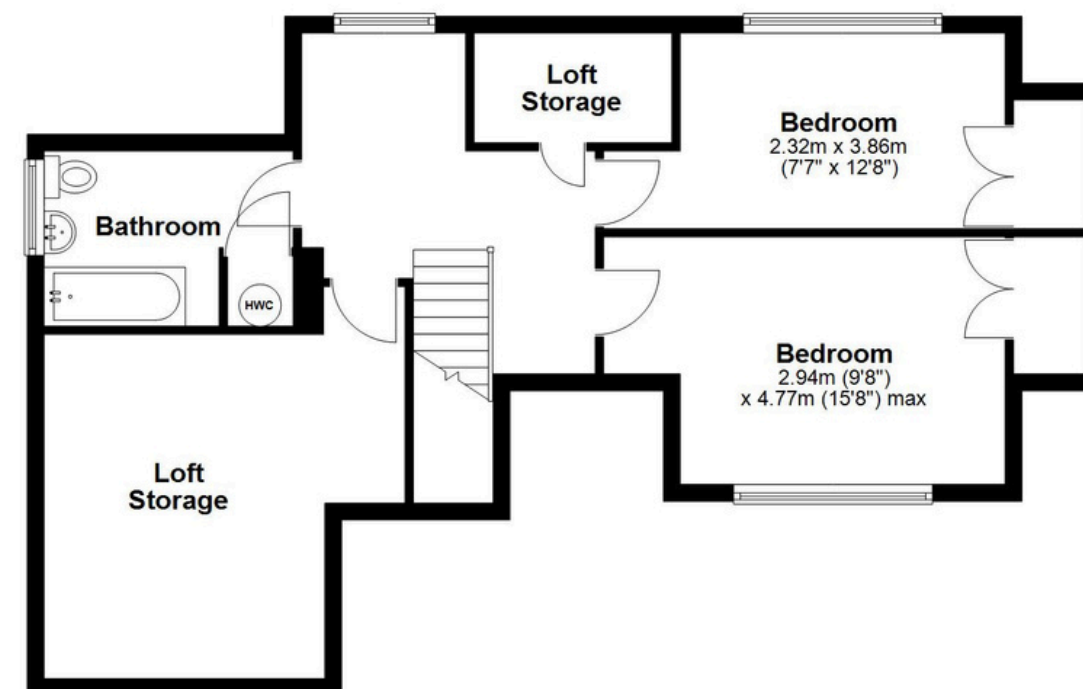
Get weekly insights and the best deals with our Mortgage Update, your shortcut to navigating the complex mortgage landscape confidently.

SCAN TO **VIEW OUR
WEEKLY FILMS &
SUBSCRIBE**

Ground Floor
Approx. 139.8 sq. metres (1504.6 sq. feet)



First Floor
Approx. 44.7 sq. metres (481.6 sq. feet)



Total area: approx. 184.5 sq. metres (1986.2 sq. feet)

This floor plan is for illustration purposes only, this is not intended to be a measured/scaled survey or comply with RICS guidelines. All measurements (including total floor area) openings, orientation and floor area are approximate. No details are guaranteed, they cannot be relied upon for any purpose and do not form part of any agreement. A party must rely upon its own inspection(s). No responsibility is taken for any error, omission, or mis-statement.
Plan produced using PlanUp.